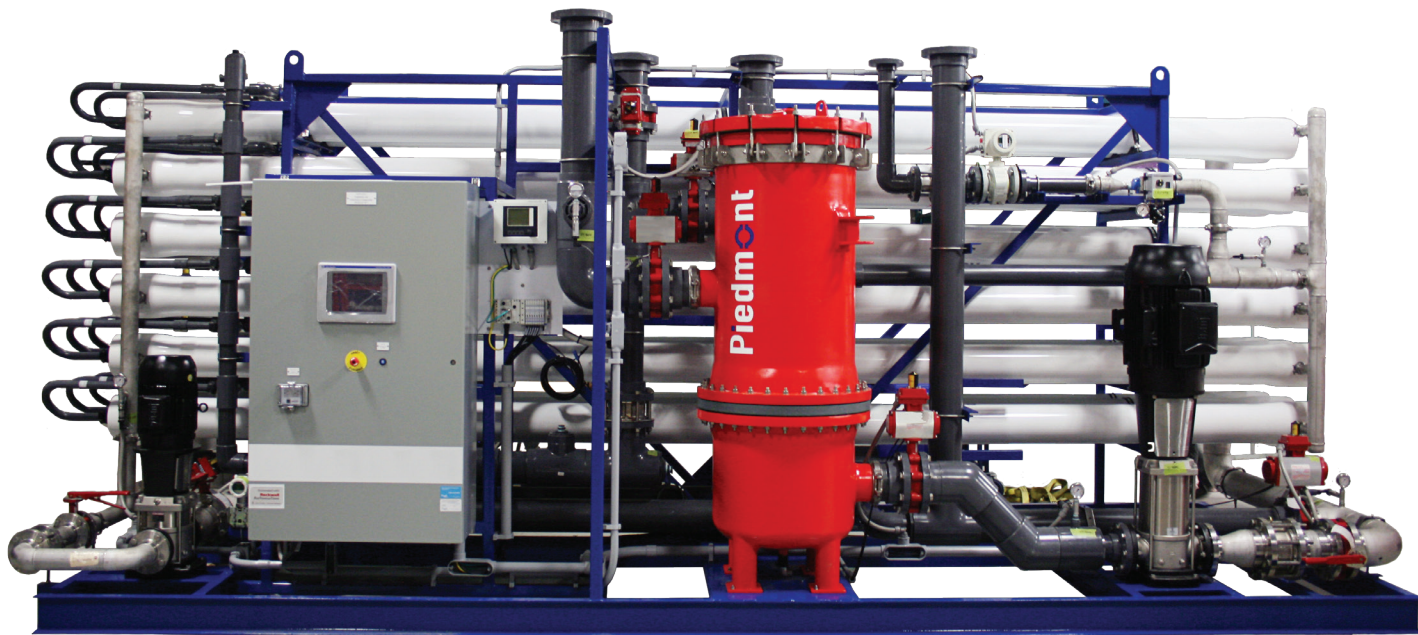


# STANDARD NF/RO UNITS

Model 1S to 4S

Capacities from 40 to 600 gpm



## Standard Features

- Allen Bradley CompactLogix PLC
- Human Machine Interface with 12" color touchscreen
- VFD for NF/RO feed pump for maximum energy efficiency
- FRP Cartridge filter for maximum corrosion resistance
- Permeate and concentrate flowmeters
- Automated inlet valve
- Separate Clean-in Place skid with all associated equipment
- Factory tested at our assembly plant for fastest startup at your facility

## Typical Applications

- Drinking Water
- Industrial Process and Reuse Water
- Municipal Reuse Water

## Optional upgrades<sup>1</sup>

- On-line analytical instrumentation (pH, ORP, chlorine, etc.)
- Remote connectivity and data logging interface
- Automated Concentrate Flow Control Valve
- Antiscalant dosing skid
- CIP chemicals dosing skids
- Pre and post-treatment (UF, MMF, UV, remineralization, etc...)

## Material of Construction

- High pressure piping 316L stainless, Sch 10
- Low pressure piping PVC, Sch 80
- Carbon steel frame with epoxy coating
- Enclosure NEMA 4

<sup>1</sup> Please consult H2O Innovation to customize your system and configure it to your needs



## System specifications

Model	1S	2S	3S	4S
Permeate rate Feed rate *	40 - 150 gpm 53 - 200 gpm	150 - 300 gpm 200 - 400 gpm	300 - 450 gpm 400 - 600 gpm	400 - 600 gpm 533 - 800 gpm
<b>Pumps</b>				
Manufacturer Feed Pump CIP Pump	Grundfos CR Series CRI Series	Grundfos CR Series CRI Series	Grundfos CR Series CRI Series	Grundfos CR Series CRI Series
<b>Membrane housings</b>				
Housing Style Rating Arrangement Housing material	6 element long 300 psig 2 or 3 stages FRP	6 element long 300 psig 2 or 3 stages FRP	6 element long 300 psig 2 or 3 stages FRP	6 element long 300 psig 2 or 3 stages FRP
<b>Cartridge filtration</b>				
Housing material Housing quantity	FRP 1	FRP 1	FRP 1	FRP 1
<b>Utility Requirements (to be confirmed based on pressure requirements)</b>				
Power (3 Ph, 60 Hz)	480/40A or 600V Equivalent	480/90A or 600V Equivalent	480/125A or 600V Equivalent	480/175A or 600V Equivalent
<b>Skid dimensions and Weight</b>				
Height : Width : Length : Approx. Weight (lbs) :	86" 53" 269" 2,700	100" 75" 269" 6,500	105" 100" 269" 9,500	105" 112" 269" 11,000