



PACKAGES TO CHOOSE FROM

Intelogx is an intelligent analytical program designed to support membrane treatment system operators with predictive analytics that help you proactively maintain your plant and optimize your system.

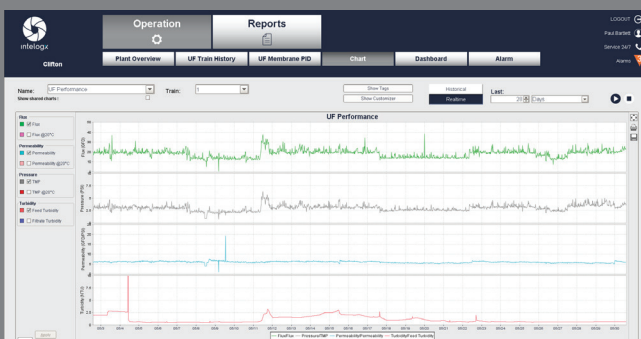
REMOTE MONITORING FOR EARLY DETECTION AND SYSTEM OPTIMIZATION

INTELOGX
CONNECT

Intellogx Connect provides a secure connection to your automation network, which allows for remote system diagnostics and enhanced troubleshooting:

- Save a site visit by allowing H2O to troubleshoot remotely
- Immediately respond to alarms and provide corrective actions
- Access the HMI controls in real time

USER INTERFACE

[illegible]

INTELOGX STANDARD

Intellogx Standard adds a centralized data acquisition system to manage your plant's data. In addition to the features of Intellogx Connect, this option includes:

- All your data logged and securely stored on the central H2O Innovation server
- Clear status indication of every analog signal on every water system in your plant
- Customizable historical trends
- Alarm notification via email or SMS
- Web access to dashboard, trends and reports
- RO normalization based on industry standard calculations
- Pattern recognition determines the effectiveness of each CEB/CIP and predicts when cleaning will next be required

INTELOGX PLUS+

Our most complete analytical package, Intellogx Plus+ includes support from H2O Innovation engineers who review and analyze your data on a routine basis:

- Customized reports based on the analysis of your membrane system health.
- "SCADA-like" read-only display allows you to access real-time system information as well as O&M manuals of all major system components

USER INTERFACE

