



CULTIVATION MONITORING & MANAGEMENT SYSTEM



24/7 SURVEILLANCE OF YOUR OPERATIONS

When it comes to agricultural production, it is crucial to have access to certain data at all times, and to monitor multiple parameters. Having this information at your fingertips in real time, even from a distance, will allow you to increase the productivity of your crops and reduce labor costs, all while optimizing your precious time.

The wireless sensor system offered by H2O Innovation makes it possible to monitor several vital parameters that will ensure plant well-being and growth.



A PRECISE OVERVIEW OF YOUR CROPS

- Precise temperature at plant
- Ground tension
- Tank water level
- Pressure (psi)
- Remote control
- 4-20 mA transmitter
- Weather channel
- Interactive satellite map



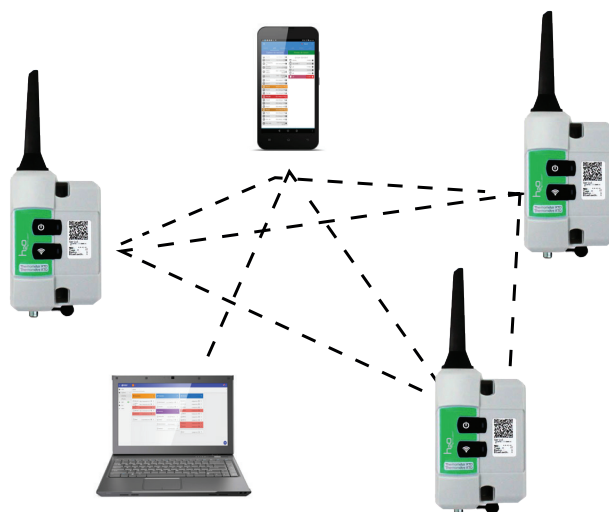


HIGH PERFORMANCE RADIO WAVES TECHNOLOGY



The H₂O Monitoring system is made up of precise sensors that allow you to remotely access the most important data from your operation, via your cell phone or computer.

The sensors dispersed on the site communicate with each other by low frequency radio waves requiring neither internet connection or cellular network. The patented “Mesh” type network has proven reliability. The technology has already been recognized for several years in different fields (maple syrup, water treatment, mining, agricultural), as one of the most dependable technologies in terms of wireless communication.



RELIABILITY & SIMPLICITY

- Easy & quick installation, minimal planification
- Rapid data refresh rate
- Modular and evolutive system
- Network tolerates breakdowns, functional without cellular network and internet
- Very good long-term reliability
- Made in **Quebec**



CERTIFIED FC
North America,
Europe, Australia and Japan

H₂O MONITORING MANAGEMENT SOFTWARE

The software was designed and developed to be easy to navigate and very intuitive, regardless of your level of technological skills. Several simple and user-friendly functions, configurable by the user, make it a complete management system.

- **Application integrated** into a tablet provided on the site, communicating with sensors in real time, for access to data on site, without internet or cellular network



Tensiomètre			Thermomètre RTD		
groupe standard			groupe standard		
Champ 01	1,7 cBar	22,9 °C	champ 01		21,2 °C
Champ 05	0,2 cBar	23,7 °C	champ 05		20,6 °C
Champ 09	0,1 cBar	28,9 °C	champ 09		22,7 °C
Champ 15	1,8 cBar	20,2 °C	champ 15		20,8 °C
Champ 21	1,8 cBar	18,8 °C	champ 21		18,6 °C

- **Configuration of alarms** customizable to each type of sensor
- **Remote control** of equipment, such as starting generators, actuating valves or starting pumps
- **Integrated automation** of basic functions to control equipment according to the status of another sensor (e.g. starting pumps depending on the temperature)

- Secured web page accessible remotely with cell phone, desktop or electronic tablet

s.vartrek

H

G

Paramètres

Personnaliser l'affichage

+

Thermomètre RTD

<input type="checkbox"/> Champ 01	1m 27s	11.0 °C	<input type="checkbox"/> Champ 01	4m 51s	3.4 cBar 14.0 °C
<input type="checkbox"/> Champ 05	1m 1s	10.9 °C	<input type="checkbox"/> Champ 05	4m 36s	1.4 cBar 11.9 °C
<input type="checkbox"/> Champ 09	1m 52s	11.2 °C	<input type="checkbox"/> Champ 09	5m 17s	1.2 cBar 14.5 °C
<input type="checkbox"/> Champ 15	6m 34s	11.2 °C	<input type="checkbox"/> Champ 15	4m 0s	3.1 cBar 12.4 °C
<input type="checkbox"/> Champ 21	6m 34s	11.2 °C	<input type="checkbox"/> Champ 21	3m 35s	3.1 cBar 12.9 °C

+

Tensiomètre

<input type="checkbox"/> Champ 01	4m 51s	3.4 cBar 14.0 °C
<input type="checkbox"/> Champ 05	4m 36s	1.4 cBar 11.9 °C
<input type="checkbox"/> Champ 09	5m 17s	1.2 cBar 14.5 °C
<input type="checkbox"/> Champ 15	4m 0s	3.1 cBar 12.4 °C
<input type="checkbox"/> Champ 21	3m 35s	3.1 cBar 12.9 °C

+

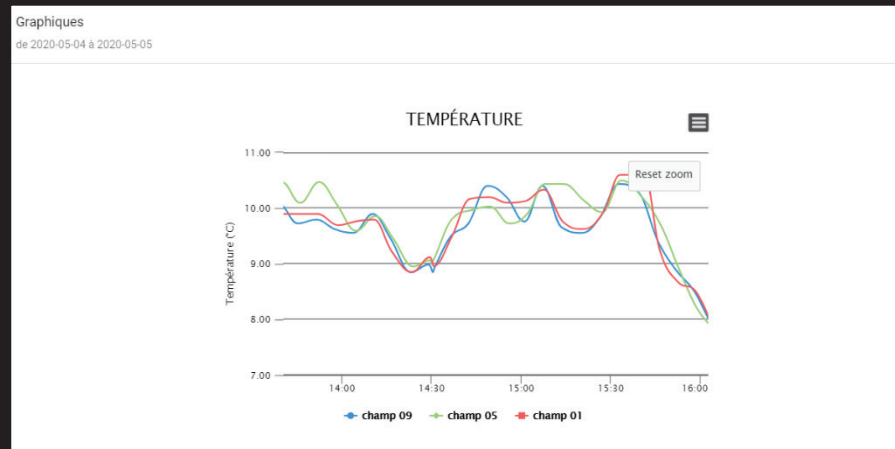
Profondeur d'eau

<input type="checkbox"/> Reservoir 1	3m 8s	C: 4.85 m H2O 9.9 °C
<input type="checkbox"/> Reservoir 2	2m 18s	C: 0.69 m H2O 9.1 °C
<input type="checkbox"/> bassin	2m 43s	C: 2.52 m H2O 9.4 °C

+

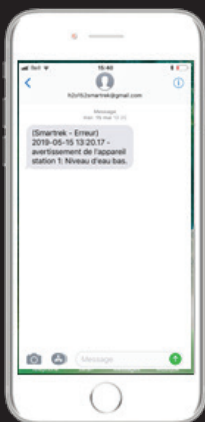
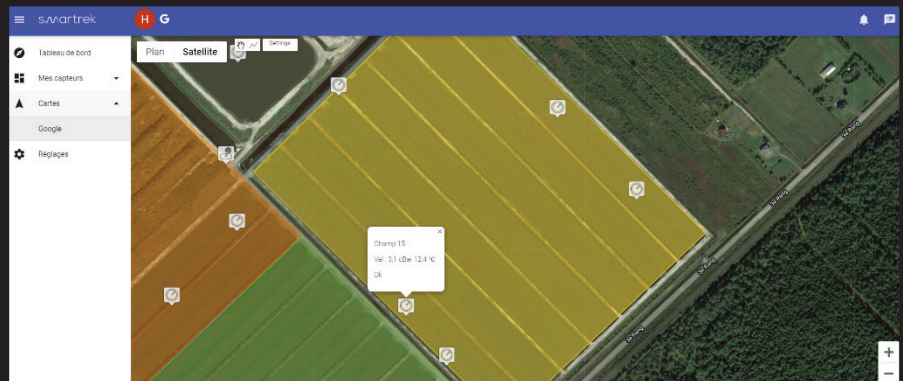
Passerelle

<input type="checkbox"/> Station	0.625%, 0.625% Saute: 8
----------------------------------	-------------------------



- 24/7 data recording allowing graph analyses

- Interactive satellite map with sensors' GPS location



- Notifications of customized alarms by e-mail, SMS or automated calls to stay aware of critical changes and to ensure optimal running of operations.



BE WISE & GO FOR AUTOMATION



h₂O MONITORING

201, 1^{re} Avenue, Ham-Nord, QC G0P 1A0, CANADA
Tél : (819) 344-2288 | monitoring@h2oinnovation.com
H2OINNOVATION.COM